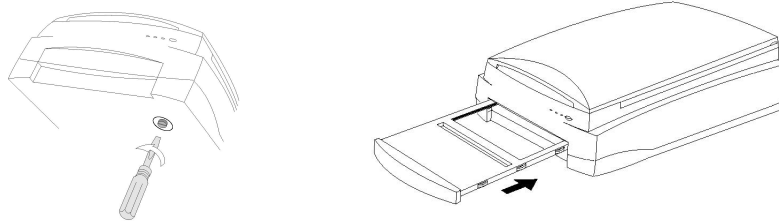


Preparing the Scanner and Connecting it to the Computer



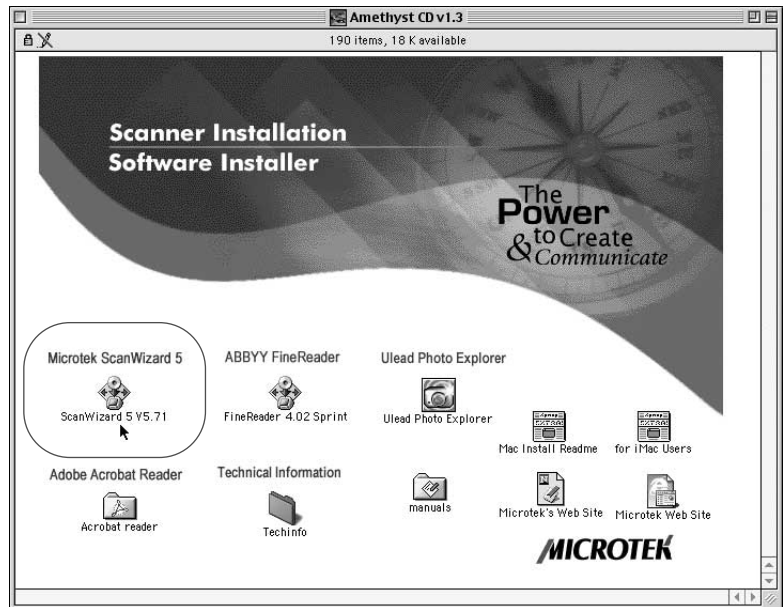
- 1 Turn the scanner on its side to reveal the locking screw. To unlock the scanner, use a coin or screwdriver and turn the locking screw counterclockwise. The screw will push out slightly when unlocked. The scanner should only be locked for storage or transport.
- 2 To allow x-rays to be scanned, remove the default sliding tray from the scanner and replace it with the Glass Film Holder, as shown on the illustration above. Then, connect the scanner to either the FireWire port on the computer or the USB hub. Both ports are supported, although using the FireWire port frees up a USB port on the hub.

Installing Scanner Software

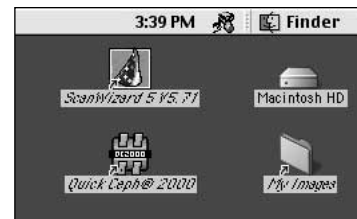
- 1 Now that you have connected the scanner to the computer, it is time to install the scanner software. Insert the "Amethyst CD v.1.3" CD-ROM found in the scanner package. An icon will appear on your desktop. Double click on this icon.



- 2 The folder shown to the right will open. Double click on the icon labeled "ScanWizard 5 V5.71", which is highlighted in the image. The program will start installing onto your computer. You will need to click on the Restart button after the installation is finished.



- 3 When the computer reboots, there will be two new icons on your desktop, "ScanWizard 5 V5.71" and "My Images". Both of these icons are aliases (shortcuts). The original items are found in "ScanWizard 5 Folder" within the Macintosh HD. The ScanWizard 5 V.71 program activates the scanner and the "My Images" folder stores the scanned images. You should arrange the icons as shown on the image to the right.



Your desktop should resemble the one shown above when the software installation has concluded.

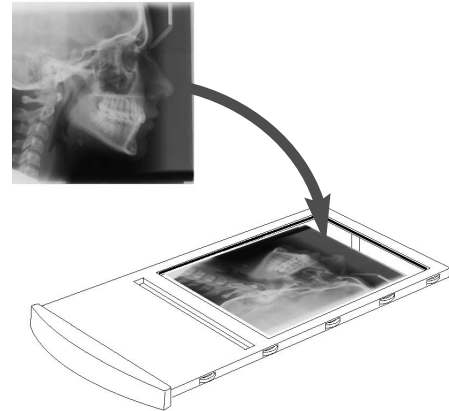
- 4 If the "ScanWizard 5 V5.71" alias is not automatically created, you can create one manually. Open the "ScanWizard 5 Folder" within the Macintosh HD and click once to highlight the icon "ScanWizard 5 V5.71". Then, go to the File menu and select "Make Alias". This will create an alias of the ScanWizard application, as shown to the right. Place this alias on the desktop.



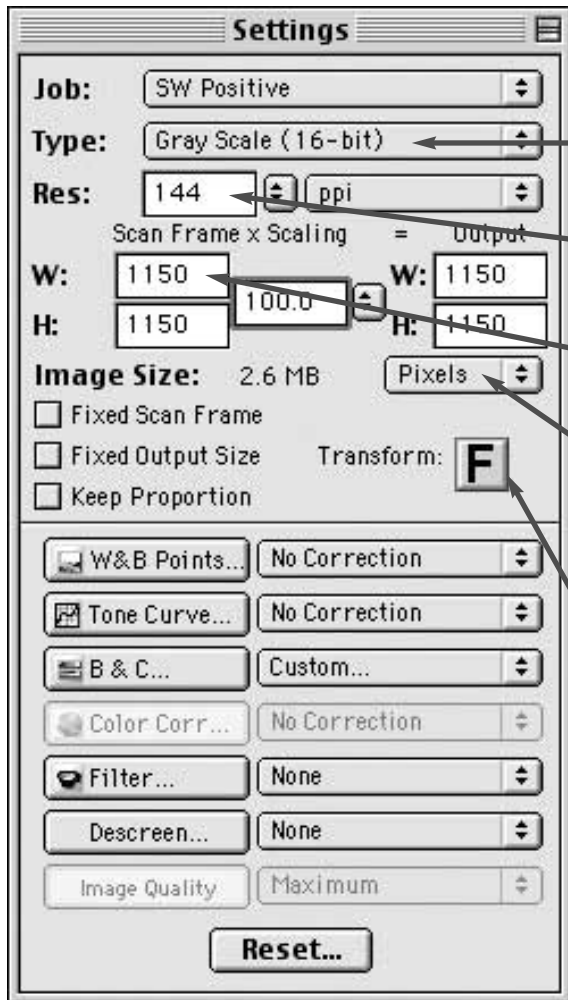
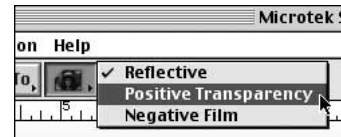
Once the software for the Microtek ScanMaker 8700 has been installed, you can begin scanning x-rays. The following section covers the recommended settings for Quick Ceph 2000 and Quick Ceph Image Pro.

Setting up the Scanner Interface

- 1 Place the x-ray on the Glass Film Holder, as shown on the right. The x-ray should be placed face-down on the glass with the nose facing toward the back of the Film Holder. Slide the Glass Film Holder back into the scanner. You are now ready to turn on the software.
- 2 Double click on the "ScanWizard 5 V5.71" icon to launch the scanner software. The Standard Control Panel window for the scanner settings will appear. Click on the red arrow icon in the upper right corner of the control panel, as highlighted below to open the Advanced Control Panel.



- 3 After the Advanced Control Panel appears, click on the face icon found under the menu bar of the preview window and select the "Positive Transparency" option. This turns on the transparency option.



- 4 On the Settings menu, adjust the scanner to the recommended settings, as shown below.

**Type of Image:**

X-Ray images should be set to "Gray Scale (16-bit)" for better quality.

**Resolution:**

The image resolution for **Quick Ceph 2000** is: **144 dpi**  
The image resolution for **Quick Ceph Image Pro** is: **72 dpi**

**Dimensions:**

These are the marquee settings. To change these values, type in the values shown below for the different Quick Ceph software.

**Note:** The units must initially be changed to pixels.

The recommended dimensions for **Quick Ceph 2000** are:  
**W: 1150 pixels x H: 1150 pixels at 100%**

The recommended dimensions for **Quick Ceph Image Pro** are:  
**W: 520 pixels x H: 520 pixels at 100%**

**Image Rotation:**

This button allows you to rotate the scanned images 90° once they are scanned. This is necessary for QCIPro. For QC2000, users can rotate the image 90° during the import of the x-ray images.

**Note:** Settings displayed are for QC2000.

*Scanning with the ScanMaker 8700*

**1 Overview Button:**

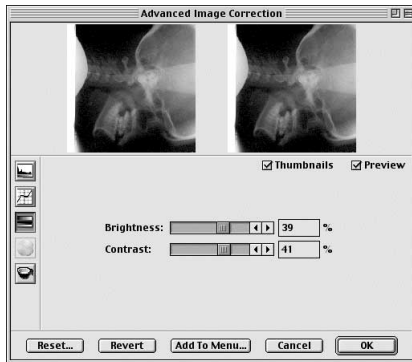
Click this button once the scanner settings have been entered to preview the x-ray.

**2 Image Correction:**

If the image requires adjustment, click on the Correction menu and select the "Brightness and Contrast" option to lighten or darken the x-ray,

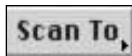


The "Brightness and Contrast" menu is shown below. The images preview the effect of the changes. To apply the changes, click on "OK".



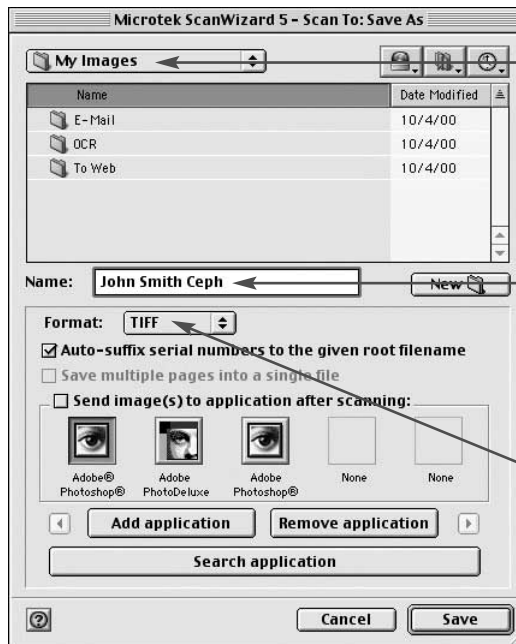
**2 Saving the File:**

Once the desired corrections have been made to the image, you can save the file. Click once on the "Scan To" icon at the top of the preview window.



By default, the image will be scanned to a file, and the window shown to the right will appear. Hold down the Scan To button brings up an option menu to allow you to send the scanned image to a different location, such as the printer, for example.

Click on "Save" to save the image.



This window displays where the scanned files will be saved to. By default, it saves it to the My Images folder, which has a shortcut on the desktop.

We recommend naming the files with the name of the patient, followed by the type of x-ray. This allows for easier identification.

The file format should be set to TIFF for higher image quality.